



NRCIL Transition Program at Lewis County Jail

Provided by:

Karen Boliver
Aileen Martin

2-27-2020

1

Your Trainers Today:





Karen Boliver
Associate Director

Aileen Martin
Executive Director



2

LEWIS COUNTY

Facts: Population: 26,447 (2018) Decreasing annually
Forth -Least populous county in New York
12.1 % of the population live below the poverty line




- 1,290 square miles- founded in 1805
- Unemployment Rate 6.8% (Jan. 2020)
- We are one of four counties in NYS that have more cows than people
- 10 Public Libraries
- Maple Ridge Wind Farm- the largest windfarm in NYS- 195 Turbines
- 6 Schools Districts within Lewis County



3

Lewis County Jail

42 Individual cells within the jail
2 16-person pods (male)
4 2-person pods (female, juvenile, suicide watch)
1 2-person pod (usually medical)
19 Inmates were housed out for a total of 428 days in early 2017 because of an increase in drug related crimes



4

In The News

- Two-year investigation results in Lewis County drug bust
- Four accused of meth manufacturing in Lewis County
- 3 Lewis County People Arrested in Month-Long Meth Investigation
- Lowville man facing federal drug charges
- Nine arrested in Lewis County drug sweep involving mostly prescriptions
- Operation Northern Watch, 16 individuals were arrested. Arrests were mostly pertaining to Meth and opioids
- We have had a high prevalence of overdose deaths in Lewis County
- Operation Gravy Train-106 people arrested in neighboring county, \$94,000 of drugs seized
- There are numerous drug related arrests occurring daily/weekly

5

Community Response

- **Formation of It's Real and It's Local-** Two Village Mayors form a community committee to respond to the increase of drug use and deaths within the southern part of the county.
- **Formation of What You Don't Know Can Hurt You-** A community member in recovery began hosting testimonials within each school district in Lewis County.
- **Lewis County C.A.R.E.S-** A local reporter collaborated with NRCIL to host a community awareness forum with guest speakers and expert panel members to educate and provide information.
- **Formation of Project Safe Community-** in Northern Lewis County a group was formed to provide support and information to their local community members.
- **Formation of Lewis County Action Meeting for Substance Abuse/Opiate crisis-** Community Services Director reached out to local community agencies, peers, community members, and coalition members to form a grass roots group to unify efforts throughout the county.
- **NRCIL -** Continues to provide support groups in the community and jail and the opportunity for sober activities within the community.

6

Making a Plan at NRCIL Began

- A **conversation** identifying the needs within our community
- **Solutions** and possible services and programs
- **The idea** for NRCIL Advocate/Peers in the Lewis County Jail was discussed and a plan was executed
- **The Meeting** held at LC Jail with the Sherriff, Undersheriff, and Jail Warden was held to share our idea
- **Staff** were hired and the advocate program was implemented within the County Jail with our first day of services beginning **June 9, 2014**

7

- The power of peer support is in the quality and power of our relationship with others
- We start where people are at- what do they want? We offer encouragement for people to define and move towards the goals and the life they identify- we walk with, not do for
- We bring hope, empathy, support and understanding to people who have been affected by trauma and a history of system failures
- We walk with others on their journey and continue to advocate with and display the power of Peer Services with each step

8

Staff Training:

- Confidentiality
- Corporate Compliance
- Trauma Informed Peer Support
- Sexual Assault
- Care Coordination
- Community Health Worker
- CPI
- Quality Assurance
- Safety for In-home visiting
- Goal writing
- Setting Boundaries

9

The Program Data

Referrals to Drug and Alcohol Treatment Centers

St. Lawrence Addiction Treatment Center- Hamilton Hall, Conifer Park, Willard Drug Treatment Center, CREDO Farm, Bradford PA Treatment Center, St. Joe's Treatment Center, Syracuse Behavioral Health Center, Canton Potsdam Treatment Center, Clifton Springs Treatment Center, McPike Treatment Center, etc.

Weekly Support Groups in jail and in the community

Double Trouble, SMART Recovery, Anger Management, AA

Referrals and collaboration with community agencies:

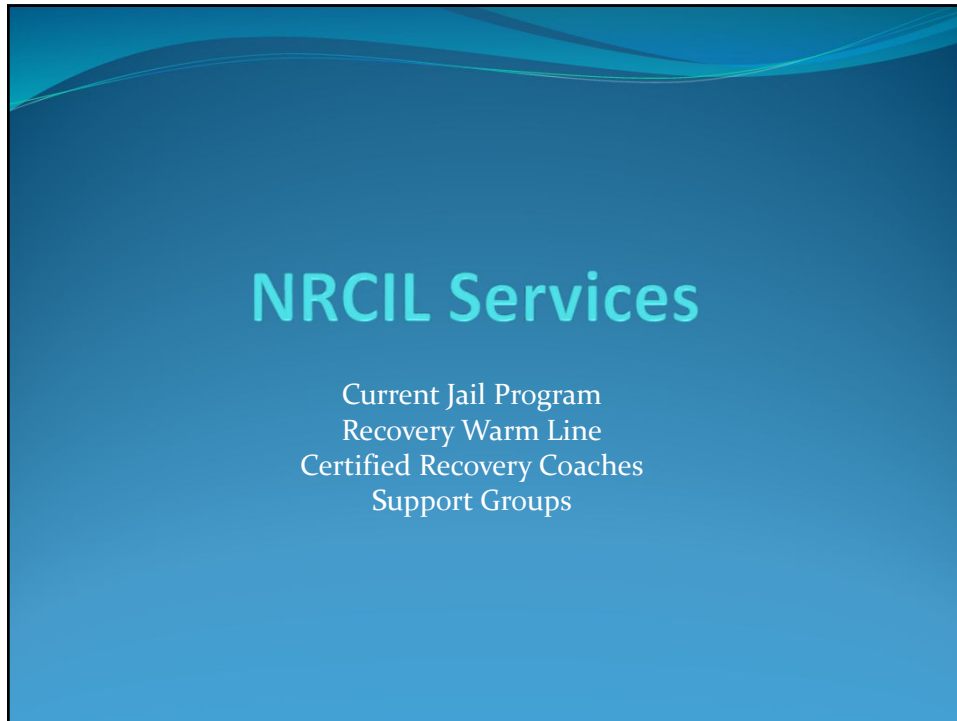
Housing, medical care, mental health outpatient, primary physicians, drug court, family support services, domestic violence, employment, outpatient addiction treatment, DSS services, probation, parole, transportation, etc...

Our Contract began Jan. 2017 to provide the MICA/ Transitions Program at the jail.

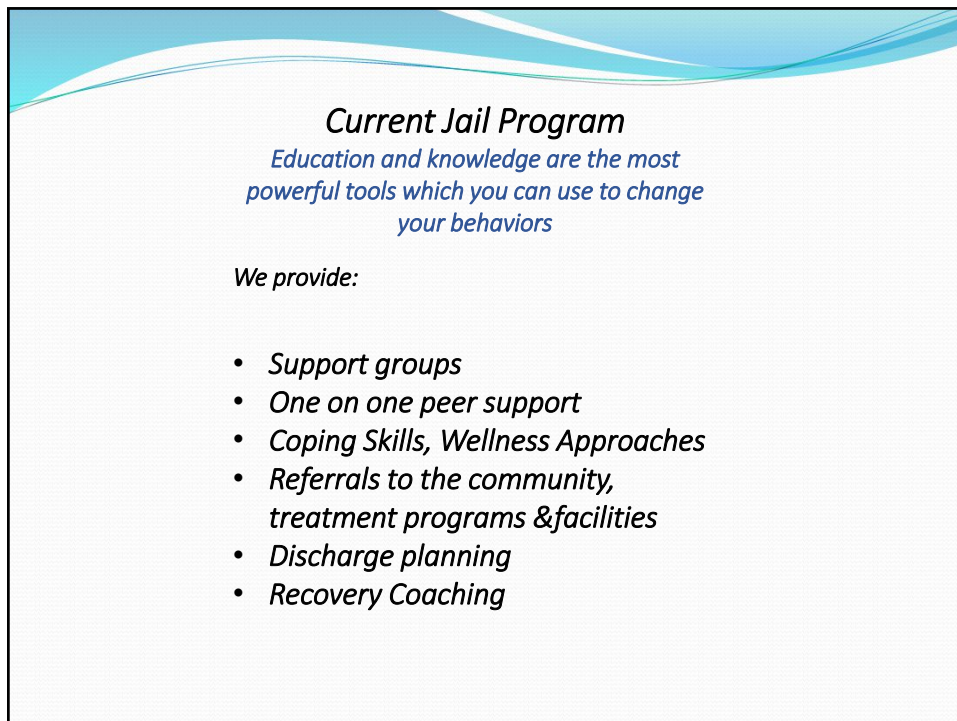
Until then our services had been provided as "mental health advocacy" as defined by OMH. (June 2014)

NRCIL provides certified Recovery Coaches through CCAR- Connecticut Community for Addiction Recovery

10



11





12

Believe in Yourself

Our Advocates:


- Give hope
- Listen
- Share information
- Provide referrals
- Guide with education
- **SOAR applications**-SSI/SSDI Outreach, Access, and Recovery



© Can Stock Photo

13

Do you ever feel like you're alone?
Do you have concerns about addiction ...
Recovery?
Do you feel misunderstood or judged?



RECOVERY WARMLINE
315-755-8408
< Talk to a peer that has walked a similar path >

14

Certified Recovery Coaches

Recovery Coach Services are but not limited to:

- Development of Recovery Plan
- Help to initiate and sustain an individual/family in their recovery from substance use or addiction
- Promote recovery by removing barriers and obstacles to recovery
- Serve as a personal guide and mentor for people seeking, or already in recovery
- Help individuals find resources for harm reduction, detox, treatment, family support and education, local or online support groups; or help a person create a change plan to recover on their own
- Help individuals find ways to stop using (abstinence), or reduce harm associated with addictive behaviors.

15

Anger Management
Every Tuesday except third Tuesday 1:00pm-2:30pm, Lowville Free Library
Twelve week support Group

PTSD/Anxiety
Every Friday 10am-11:30am PTSD/Anxiety Group, BHWC , 7550 S. State Street, Lowville

Smart Recovery
Every Monday, 12:30- 2pm. Lowville Trinity Episcopal Church Parish Hall

Double Trouble In Recovery
Every Thursday 12:30-2pm Lowville Trinity Episcopal Church Parish Hall
A 12 step group- mental illness and substance abuse recovery

Traumatic Brain Injury
Held Third Monday of each month
2:30-3:30 pm NRCIL 5520 Jackson Street, Lowville

R.O.T.E.O (Reaching Out to Each Other)
Every Monday and Wednesday
11am-2pm NRCIL Jackson Street Office

Walk A Block
Every Monday and Wednesday 10:30am-11am
Meet at Lowville State Street Office

16

Working as a Team is Key

- We meet monthly at the jail as providers to discuss how our work flow is going, any concerns to share etc.
- CREDO – addiction treatment
- BHWC- mental health provider
- NRCIL- advocacy services and supports
- Probation
- Parole
- Jail Warden
- Jail RN
- Discussion about MAT, the new bail reform law, court, etc.

17

Questions



Our Contact Information:

Karen Boliver
karenb@nrcil.net

Aileen Martin
aileenm@nrcil.net

315-836- 3735

"Lewis County is a very unique place, in many positive ways. The people and natural beauty of the county are phenomenal, it truly is a diamond in the rough. The people here have restored my faith in humanity, and you can quote me on that. "

Mrs. Swearingin, Prior Lewis County Manager

18